



Blaze a trail with us!



A new rail trail for the Goldfields can be safe, fun and good for the community and the land.

We want you to:

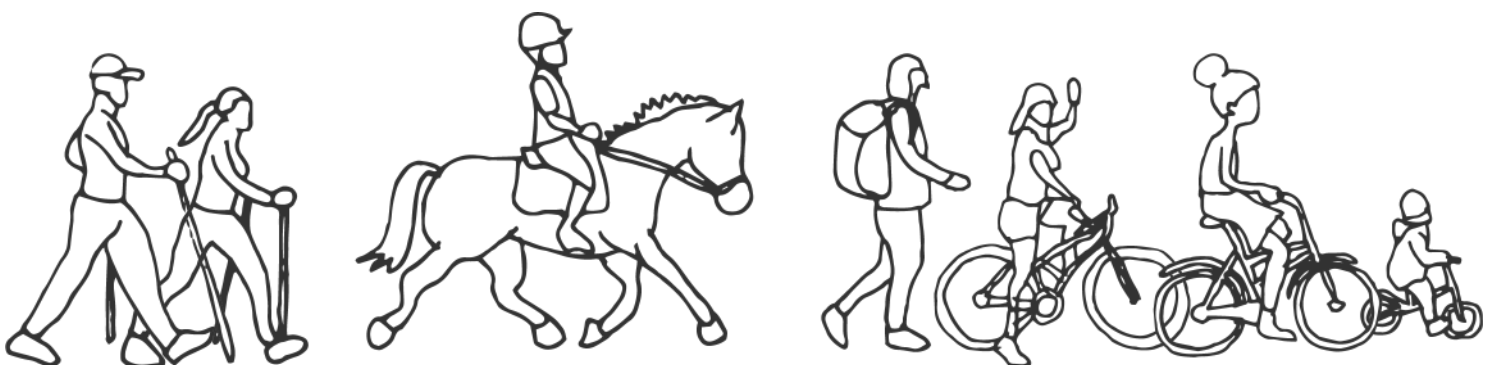
- Blaze a trail with us!
- Join us in creatively transforming the disused Castlemaine-Maryborough rail corridor.
- Help us to make it into a world-standard 55km recreational trail for all that brings new vitality and prosperity to the townships through which it passes.

A NEW RAIL TRAIL WILL BRING:

- Safe travel
- Outdoors fun
- Community prosperity
- Sustainable land use

We are:

Castlemaine - Maryborough Rail Trail Inc. , a community-based incorporated association. We have members and supporters from the shires of Mt Alexander and Central Goldfields. And we have thousands of supporters. We are cyclists, walkers and horse riders. We share a common passion for bringing life back to the disused rail corridor as a rail trail. To return it to being a valuable asset for the community and a drawcard for tourists.



Why a rail trail

Rail trails have become a magnet for tourism and a boon for local communities here and overseas.

Victoria leads Australia in rail trails: we have more than 40 of them.

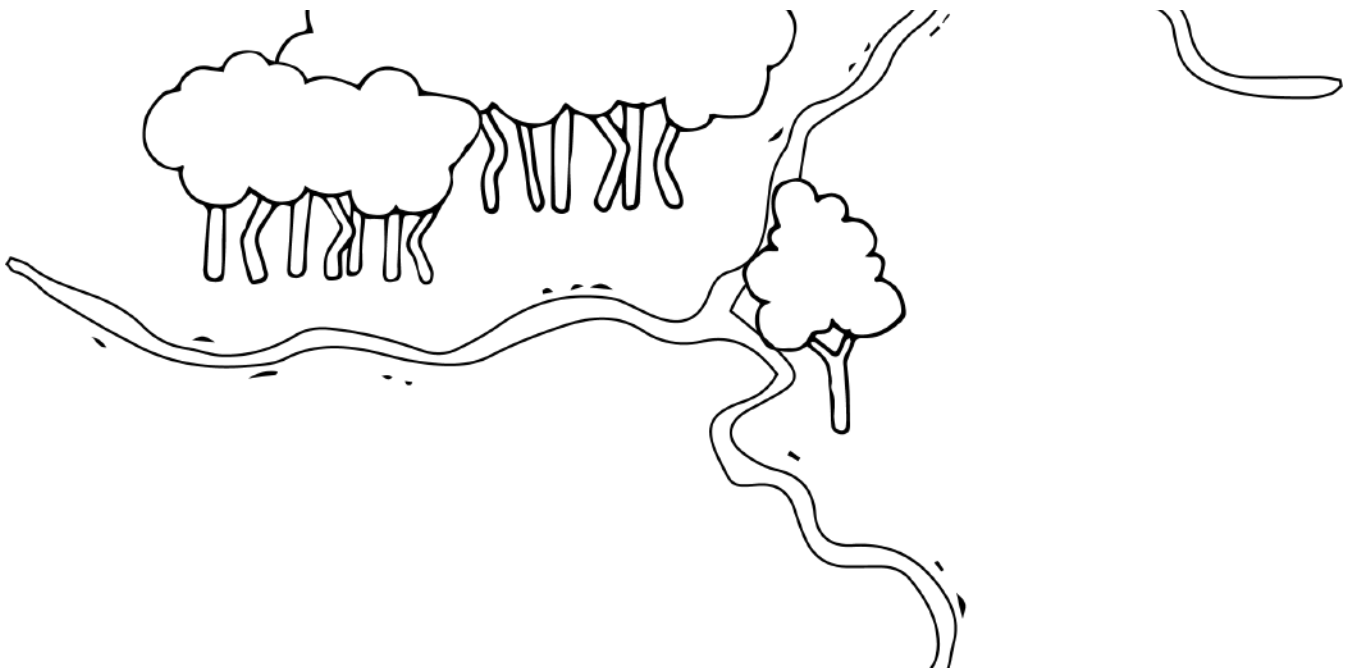
Rail trails are scenic, graded trails for riders and walkers of all ages and abilities. They make sensible use of rail corridors that have been de-commissioned and often become weed infested.

Benefits of a 55km Castlemaine-Maryborough rail trail are:

- separating riders and walkers safely from motorists (sharing is appealing for neither)
- gentle gradients suitable for all
- proven economic and social benefits for local communities
- sound land use instead of more decades of neglect
- delivering regional and State objectives for more walking, cycling and tourism
- accessible by all ages and abilities
- opportunities to integrate local arts, history and natural attractions
- significant collaboration between the Shires of Mt Alexander and Central Goldfields can attract State and Federal Government funding

The last passenger service used the Castlemaine-Maryborough rail line 43 years ago, and the last freight service 16 years ago. In several places along the route the rail track is already being removed.





We want community and government working together

Community support is growing

We have gathered more than 4000 supporters since Spring 2020.

We have developed the trail proposal by consulting with community groups in Castlemaine, Newstead and Guildford, Maryborough and Carisbrook, as well as several rail trail experts.

We have received widespread support from riders and walkers, families, community leaders, and small business operators who want action now.

Government help is essential

We've received strong support and seed funding from the Mt Alexander and Central Goldfields shires.

This will be a big project. It needs the support those councils, the State and Federal Governments, and VicTrack, which controls the disused corridor.

That multi-level collaboration has been the winning formula with other rail trails, in Central Victoria like Bendigo-Kilmore and the Macedon Ranges trail.

A feasibility study is the place to start

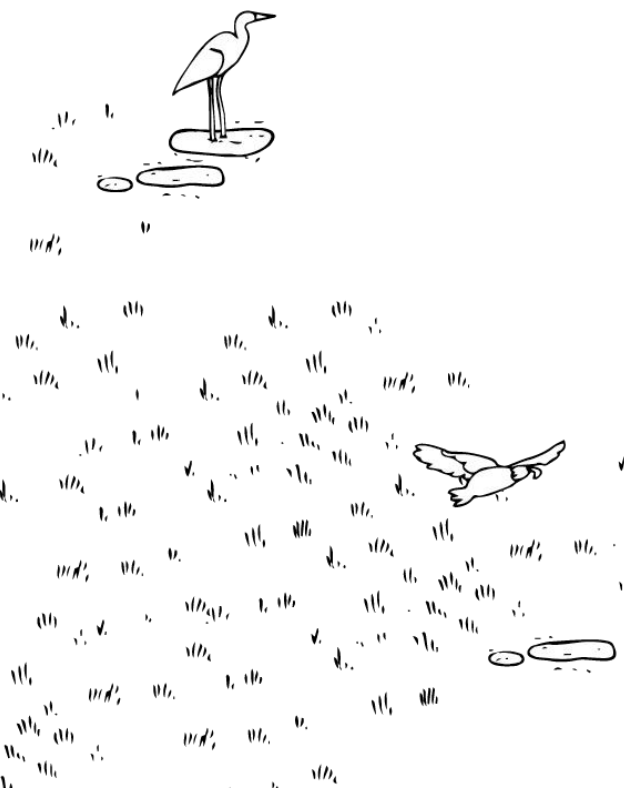
The trail's benefits are projected to significantly exceed its costs. Payback can occur in just a few years. It can be constructed relatively quickly too.

These and other factors can get formally evaluated by a feasibility study and business case. The study will help reassure the community - and governments that provide the capital - that a trail's social and economic benefits outweigh its costs.

The study can also look at more specific options like the route, build stages, and local remediations for bridges and embankments to make them safe.

We're looking to the shires of Mt Alexander and Central Goldfields and the State Government to share the cost of the study.

The 55km trail can support up to 150 trades and allied jobs during construction. And each year it can attract 65,000 - 100,000 riders and walkers contributing \$2m - \$4m in additional visitor income to towns across the two shires.



You can help

We hope you are:

- as excited as we are at the prospect of this new recreational trail in our region
- motivated to see the trail built so you can discover it with your friends and family

You can help restore one of the region's most scenic but deteriorating land corridors. And you can play your part in helping the region blossom economically.

If that sounds like you, then you're a **Trail Blazer**, and so please consider:

- subscribing to our e-newsletter
- adding your voice to more than 4000 others on our online petition calling on your council to fund a feasibility study
- joining our association and volunteering
- participating in one of our events
- contacting us for more information

Visit our website to get involved!



Scan to
visit our
website

Castlemaine - Maryborough Rail Trail Inc.

CM.RT



www.cmrailtrail.org.au



hello@cmrailtrail.org.au



[cm.railtrail](https://www.facebook.com/cm.railtrail)